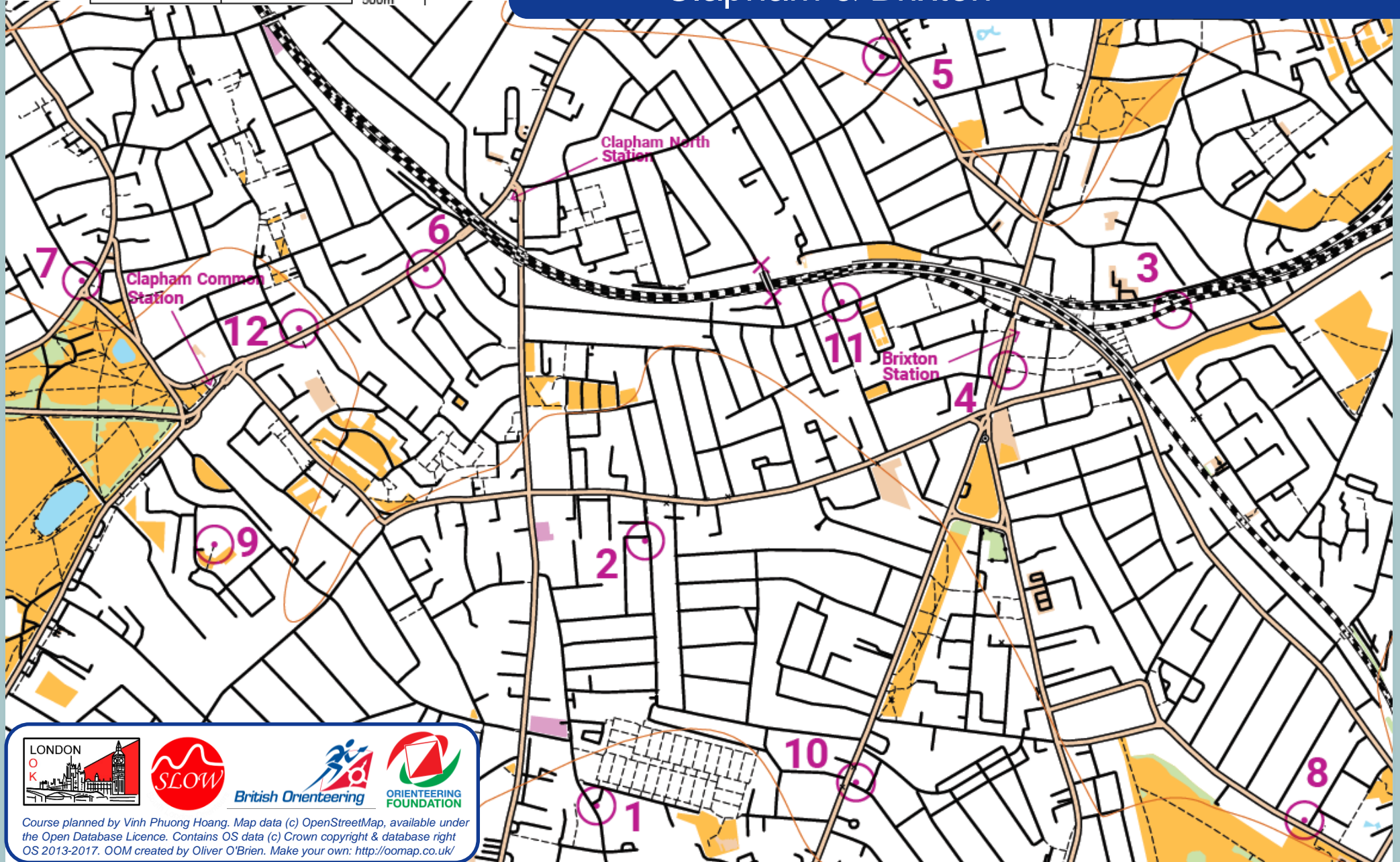


Streetspace Challenge Clapham & Brixton

scale 1:10000, contours 10m
500m



Course planned by Vinh Phuong Hoang. Map data (c) OpenStreetMap, available under the Open Database Licence. Contains OS data (c) Crown copyright & database right OS 2013-2017. OOM created by Oliver O'Brien. Make your own: <http://oomap.co.uk/>

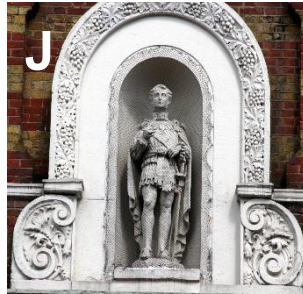
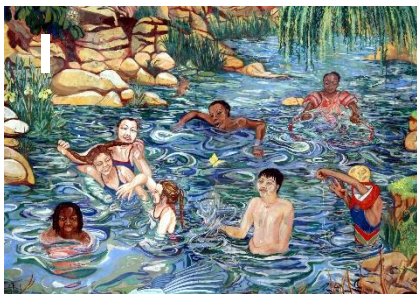
Explore the area, discover Streetspaces and get active with our series of match the photo to the map challenges across London.



Each photo below is labelled with a letter – simply visit the 12 numbered controls marked on the map and match them with their photo. Write the letter against the correct number & submit your answers at www.britishorienteering.org.uk/streetspace_challenges to be entered into the TfL prize draw.

Name

Time Taken



1		7	
2		8	
3		9	
4		10	
5		11	
6		12	

Tweet your fun to
@GBRorienteering
@TfL

TfL and London's boroughs are creating more space for people to safely walk or cycle as our city emerges from the coronavirus lockdown. Temporary cycle lanes and wider pavements are among the changes that have been made.